

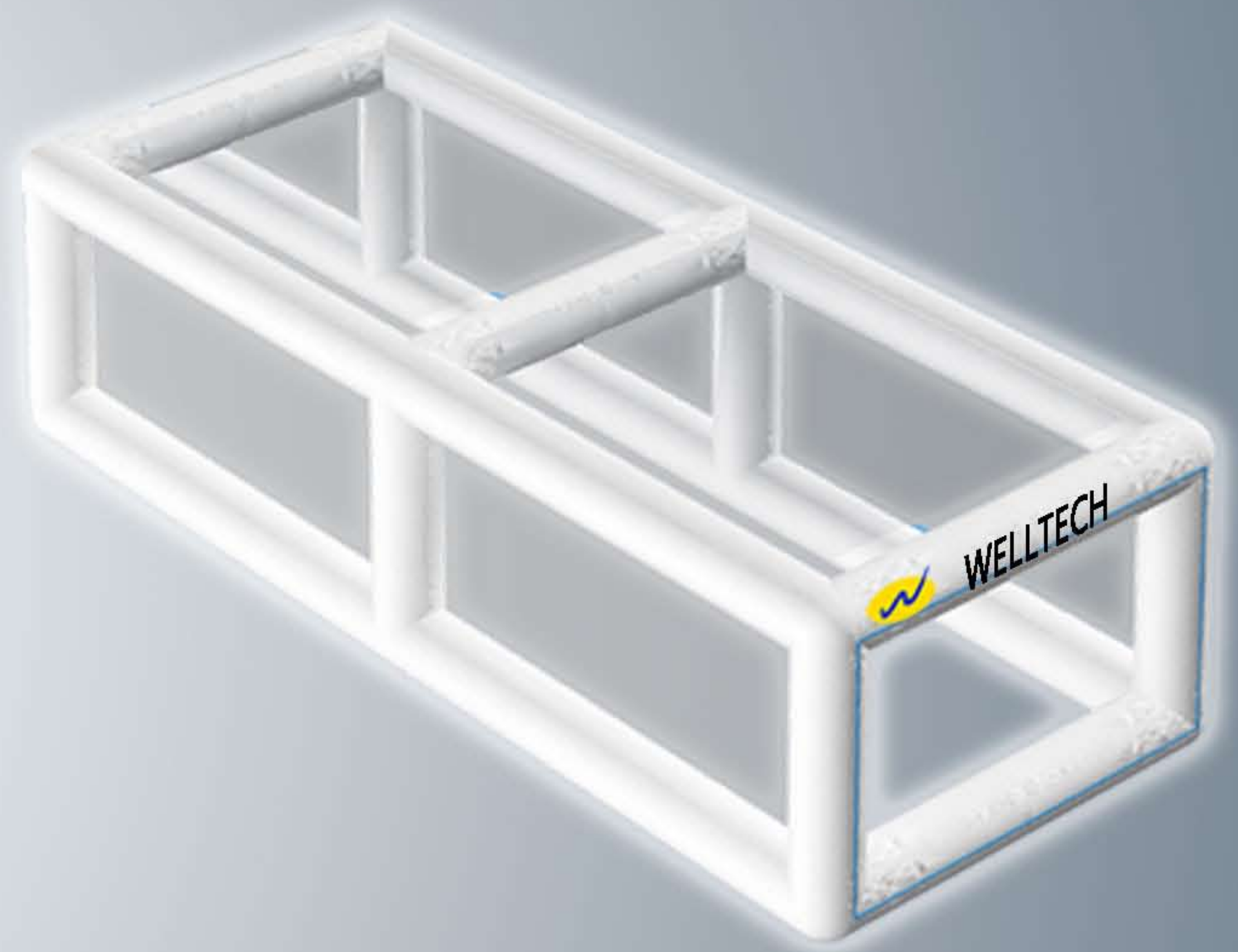


Hypoxic Swimming

Hypoxic Swimming : Live Low, Swim High

Welltech's Hypoxic system integrates with the inflatable to simulate the hypoxic environment for swim training.

It can simulate altitude up to max 7000m

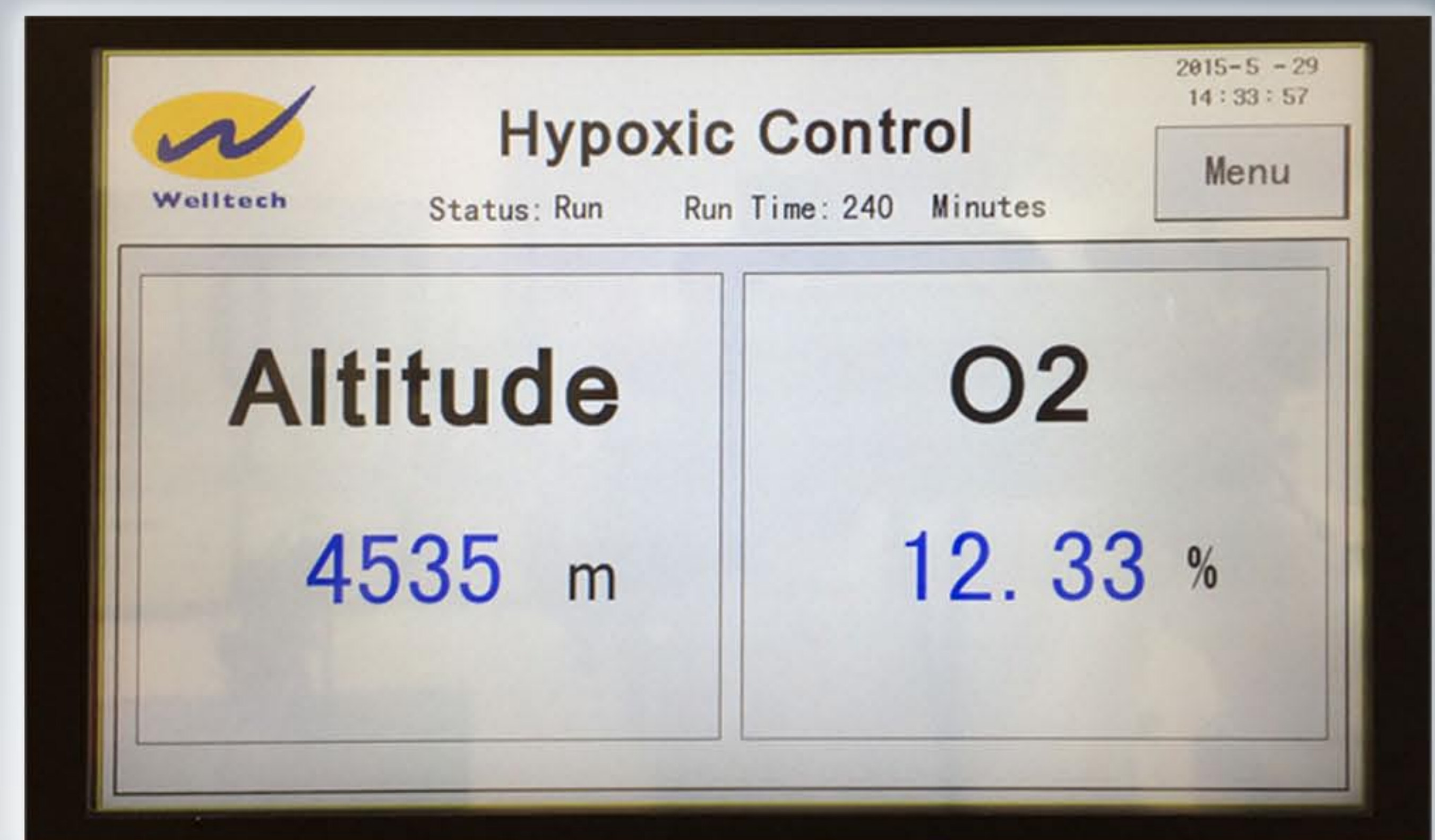
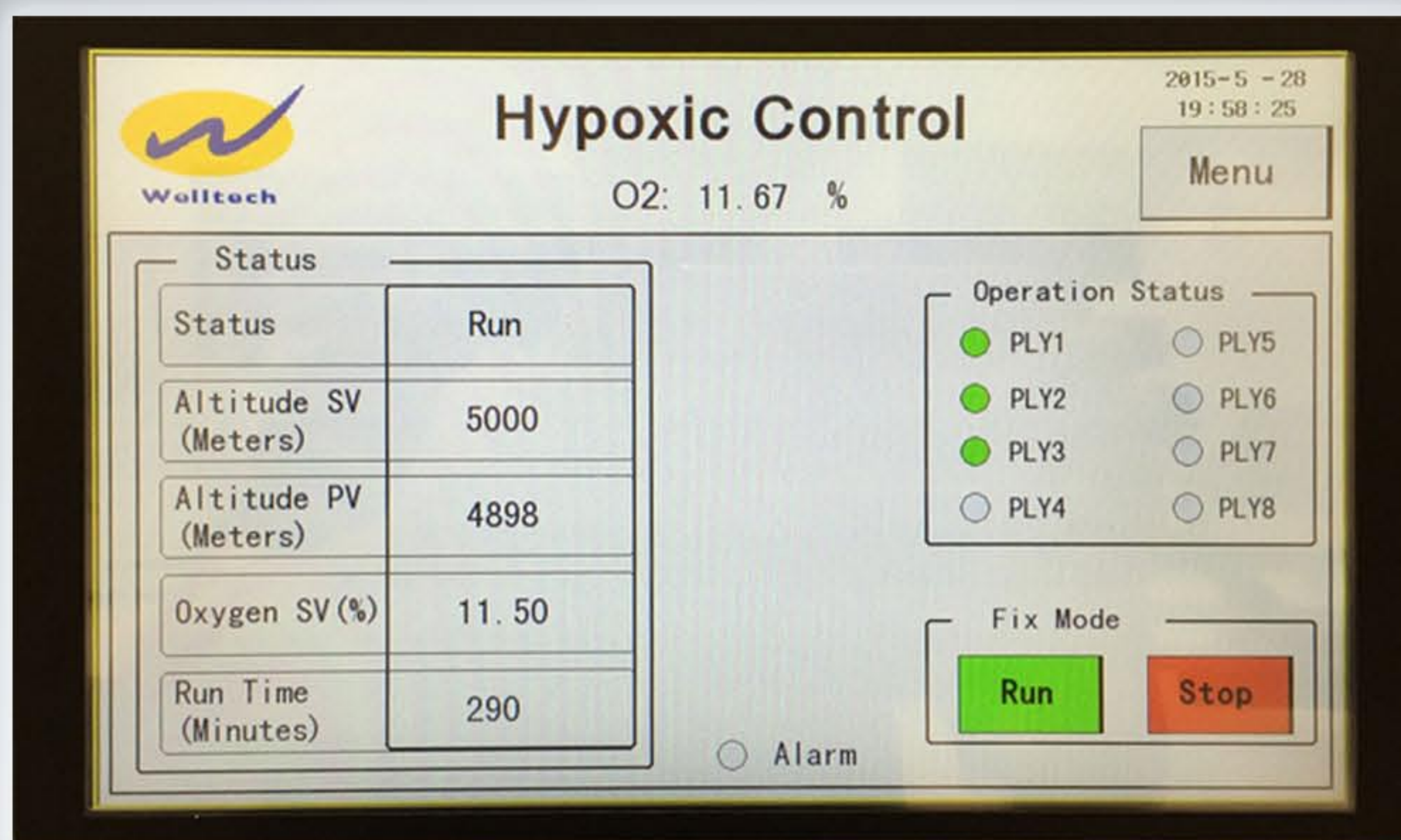


The hypoxic system consists of

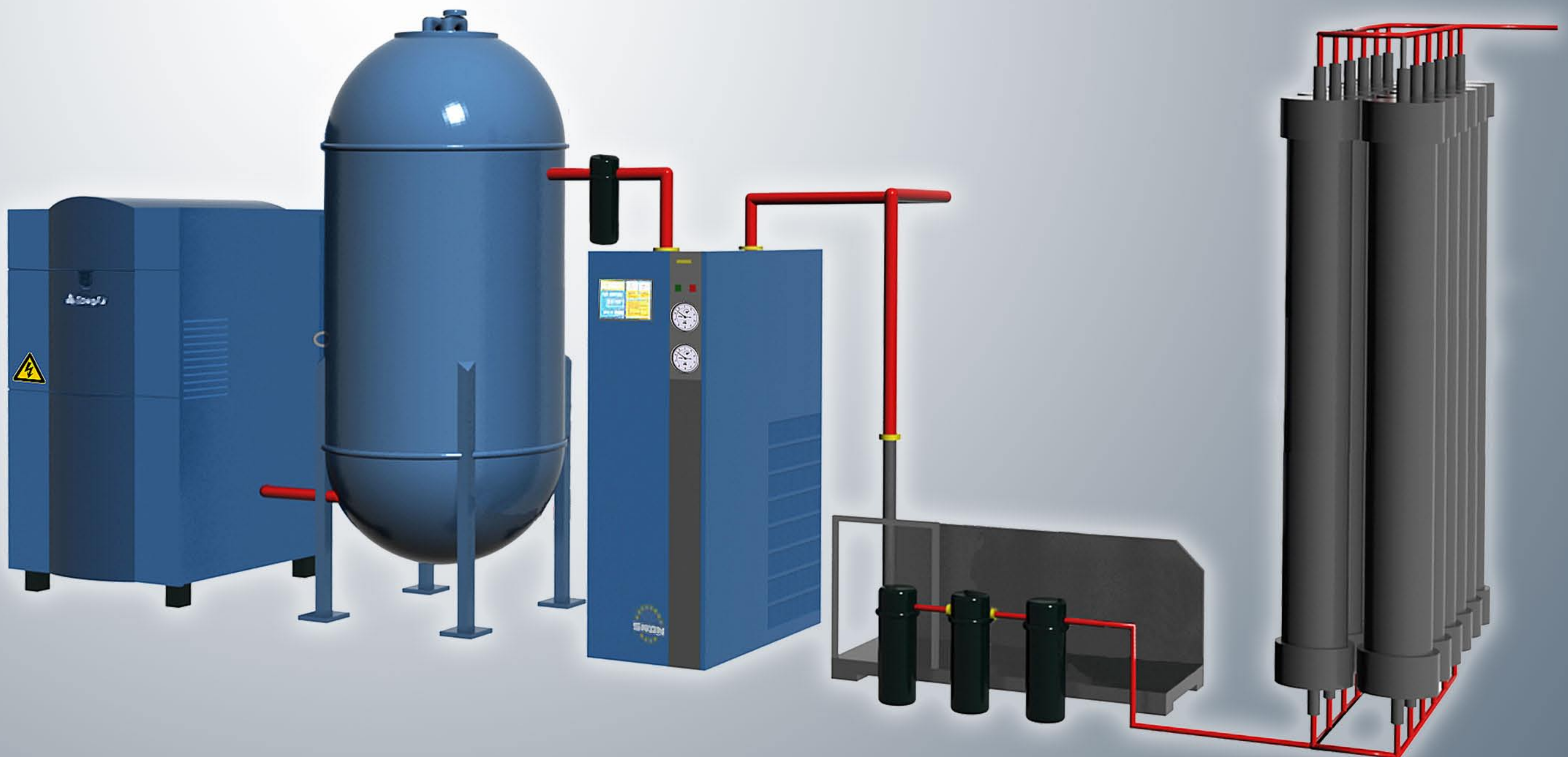
- LCD touch screen controller
- Membrane system
- Air compressor
- Dryer
- Pressure vessel
- Filtering system
- Control valve
- Alarm and safety control
- Inflatable (custom design dimension)

Controller :

- LCD touch screen display
- Fix mode and program mode
- With data log function
- With history of trouble shooting
- With alarm display



Hypoxic system design



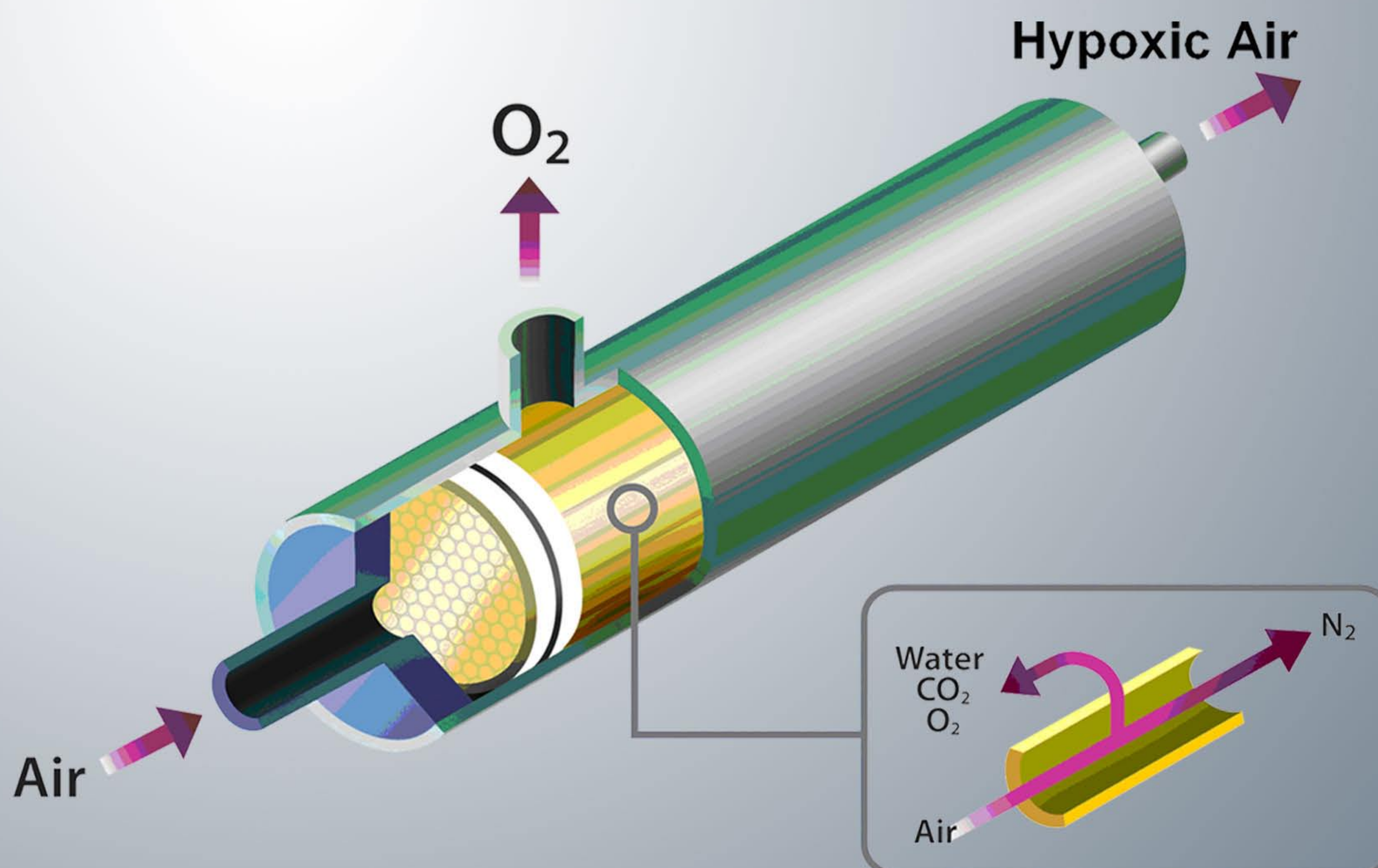


The no. of membrane, capacity of air compressor and dryer is depends on the room volume and its altitude control. The hypoxic system is custom design for different application. Consult Welltech for more detail .

Theory – how to generate the hypoxic air

Hypoxic Modules

The hypoxic modules is the spirit to generate the hypoxic air to the room(s). Inside the hypoxic modules , the high pressure air passing through the hollow fiber membrane so that the smaller oxygen molecules are separated and leaving a higher concentration of nitrogen (hypoxic air) out. The hypoxic air is purged into the room(s) which is controlled by the non-drifted oxygen sensor.



The hypoxic air generated by the physical method which is safe for human use.