



Welltech Instrument Company Ltd

CE

Panelized Environmental Chamber JTH-P Series

Welltech stainless steel polyurethane sandwiched panelized chamber can custom made to any size for different application. For refrigeration we are using reliable compressors for high performance cooling.

Model : JTH-P Series

Temperature Range : -70 to 80°C

Humidity Range : 10-99%RH



Panelized Chamber: Panel: 100mm thickness, urethane-foam sandwiched between stainless steel interior & exterior wall. Polyurethane sandwiched panel (PU panel) are of 100% polyurethane insulation, which is constructed by being foamed in place with polyurethane using high pressure. They have certain dimensions. mm. The maximum lengths of panels are 12m. Non-standard size are also available.



Features :



LCD Touch Screen Controller

- With digital display, graph display, error diagnostic, programming and segments setting, alarm setting, history display, password protection. Program up to 120 pattern



Digital Humidity Probe

- Replace dry and wet bulb method
- Accuracy: +/-1.5%RH



Cable Port

- O.D.: 50mm,80mm, 100mm or 150mm



Grounding Terminal



Dual Compressor Design



Viewing Window

- 250x330 or 490x540mm (WxD)
- With lamp



PLC Microprocessor System



Signal Lamp System



Flash Card Data Storage



Water Re-fill System

- Once the water is not enough, the water will go into the water tank automatically



RS232 or RS485 interface

- With PC software



Cartridge Type Water Tank

- With water level indicator



Individual Thermostat for heater and boiler



Castors



Lockable Power Switch

Optional Features :



Chart Recorder
• No of channel:2



Paperless Chart Recorder
• No of channel: 2,4,6,12



Emergency Stop
• with cover



Air Curtain



Transfer door



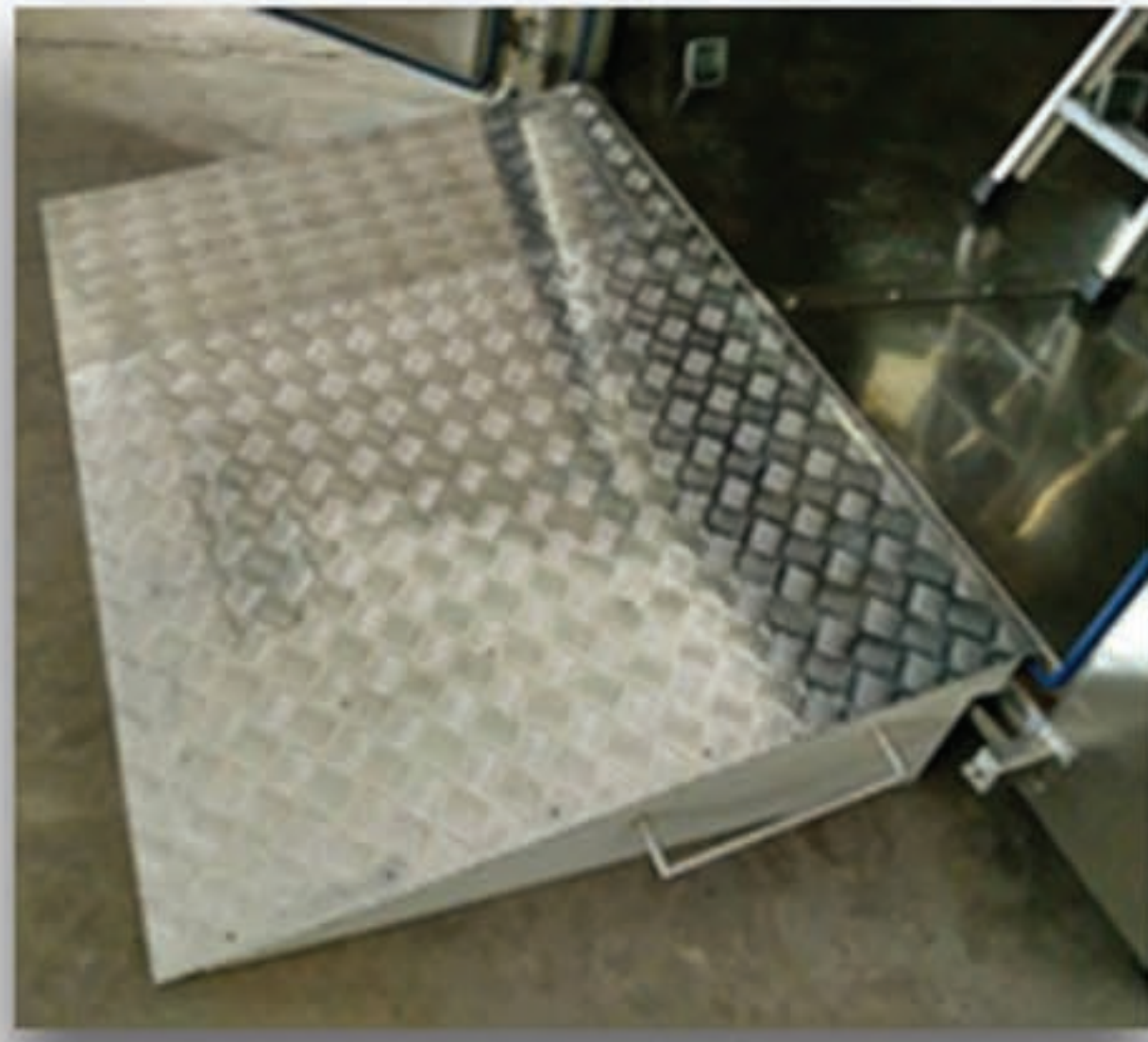
Temp/Humi/O2/CO2 display



Solar Lamp



Emergency Lamp



Ramp



Remote control



Digital Thermostat



Time Signal Terminal



EXIT sign lamp



Power Socket



Intercom



Window



Water Tower



Water Chiller



Waterproof Lamp (dimmable)

Standard Features

- Material: 100mm polyurethane sandwiched panel, both 304 stainless steel interior and exterior, with cam lock
- TEMI2700 LCD touch screen digital display controller, programable
- Model: fix or program mode
- Temperature: -70 to 80C (option with 120C)
- Humidity: 20- 99%RH (with 10%RH as option)
- Accuracy: +/-0.5C, +/-4%RH
- Fluctation: +/-0.5C, +/-4%RH
- Uniformity: +/-1C, +/-4%RH
- Stability: +/-0.5C, +/-4%RH
- Resolution: 0.01C, 0.1%RH
- Capacity: custom made
- Sensors: PT100 & digital humidity probe
- With viewing windows & lamps
- With cable ports (80, 100 or 150mm)
- With RS232 interface for PC control and data storage
- With data storage on SD card
- With safety thermostat control (prevent overheat)
- Error history recording
- With single door or double-wing door
- Reinforced floor for heavy loading
- Auto-water refill valve and filter
- Extra large water storage tank
- Over pressure exhaust port
- Air cool or water cool
- With ramp
- Power supply: 3phase 400Vac
- Meet EN-60204, CNS, JIS, ISO and ASTM standard
- With CE cert



Hypoxic System



Solar Lamp



CO2 Scrubber



Wind Simulator

Features include

- O2 sensor
- CO2 sensor
- CCTV
- Intercom
- Fresh air control system
- CO2 scrubber
- Hypoxic system
- Solar simulator
- Wind simulator